

SUPPLIED ONLY AS AN AD-ON OPTION TO HEMPTRAIN  
NOT AVAILABLE AS A STAND-ALONE FACILITY

#### TECHNICAL SPECIFICATONS:

- Overall dimensions: 16' L x 13' W x 18'7" H
  - See attached layout drawings
  - Low height version also available (additional cost)
- Minimum height clearance in building: 19 ft (5.8 m)
- Power Requirements: 18 kVA
  - Require standard receptacles for hoist and dust collector
- Custom Hydraulic Power Unit
- Special Dust Collection Unit included
- Includes semi-automatic bag sealing machine
- Full steel construction and powder coated
- Standard, easily sourced drive components

#### PROCESSING INFORMATION:

- Input— Bulk bags from HempTrain Hurd output stream
  - Full open bottom bulk bags required
- Output—Compressed Hurd bags
  - Approx 15 lbs (6.8 kg) per finished bag
  - Bag size = 9" W x 12" H x 17" L
  - 2:1 compression
  - Approx 65 Liters once uncompressed
  - Sized to stack on standard pallets
- 80 bags / hour (1200 lbs / hour approx)

#### SHIPPING INFORMATION:

- 1—40' HC shipping containers or flat-deck trailer
  - Total weight 10,000 lbs (4,500 kg)
- Delivery available across the world
- CSA/UL/CE Certifications available
- Installation/commissioning /training included

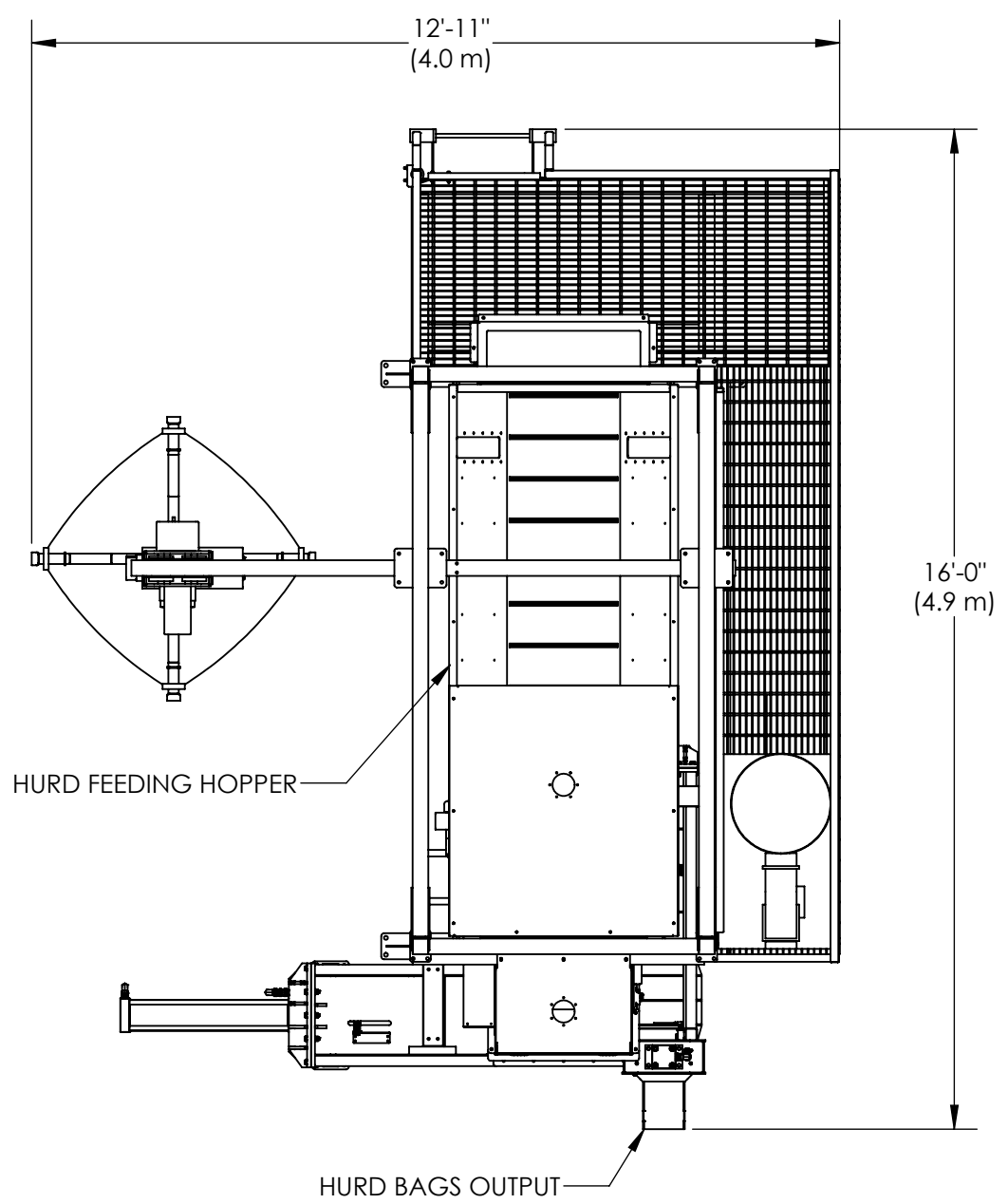


PLEASE CONTACT FOR QUOTES AND LEAD TIMES

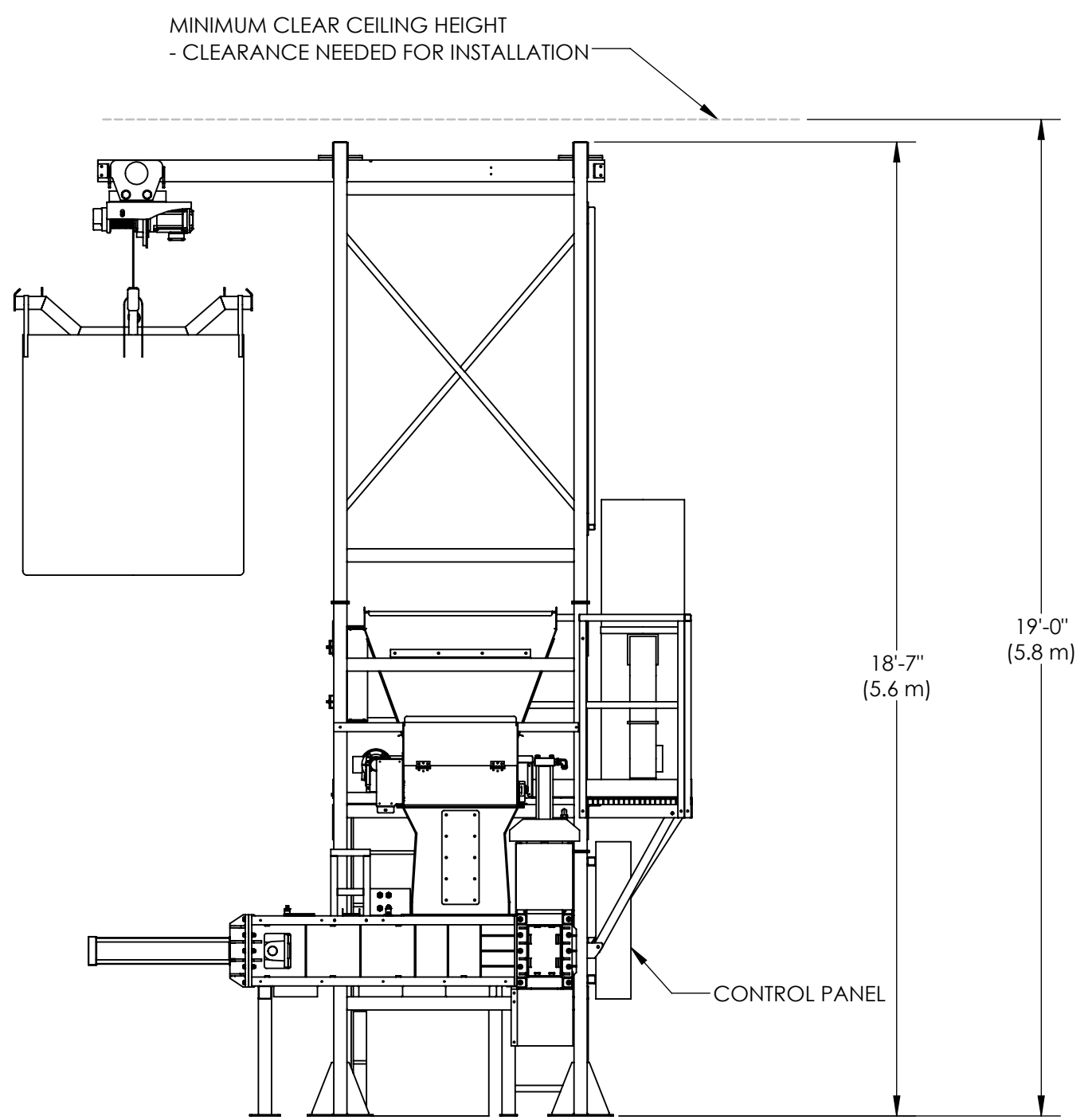
Phone: 1.877.974.3377

Fax: 1.403.719.7642

Email: [info@canadiangreenfield.com](mailto:info@canadiangreenfield.com)



**PLAN VIEW**



**SIDE VIEW**

**APPROVED FOR CONSTRUCTION**

APPROVED BY: \_\_\_\_\_

DATE: \_\_\_\_\_

QTY: \_\_\_\_\_

**CANADIAN GREENFIELD**  
TECHNOLOGIES CORP.

CALGARY, AB, CANADA

GENERAL ARRANGEMENT DRAWING  
 SUBJECT TO CHANGE  
 PLEASE REQUEST CURRENT LAYOUT

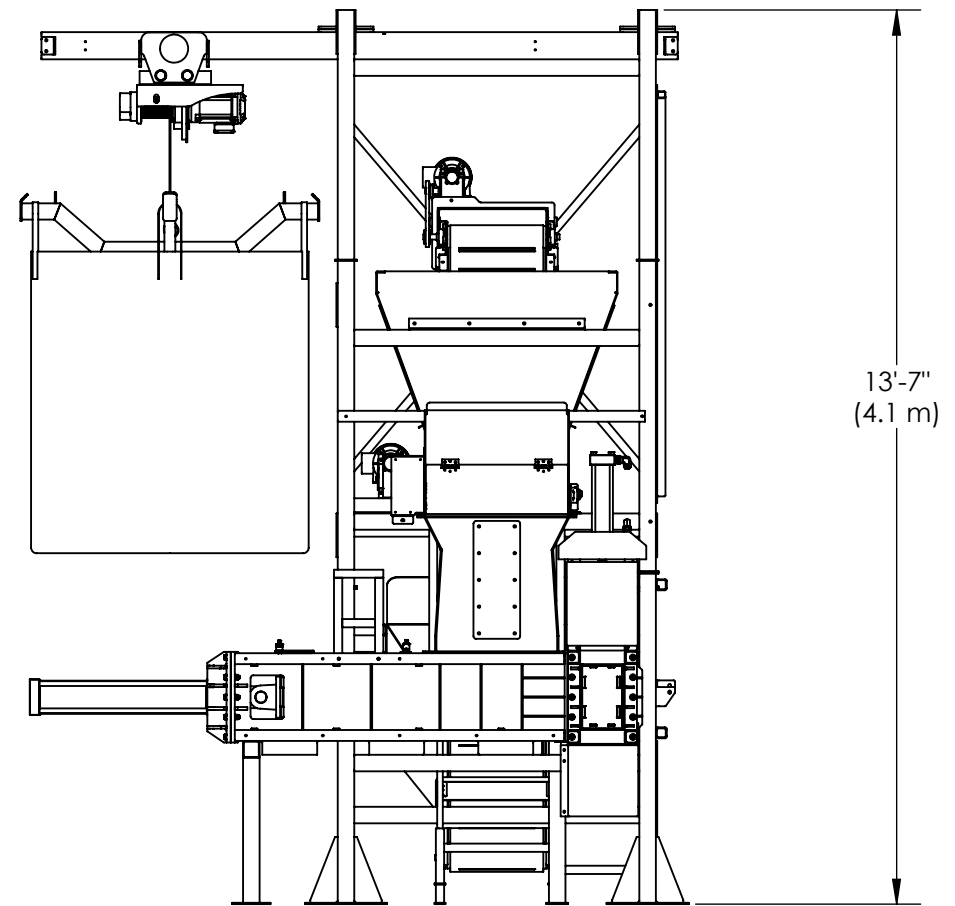
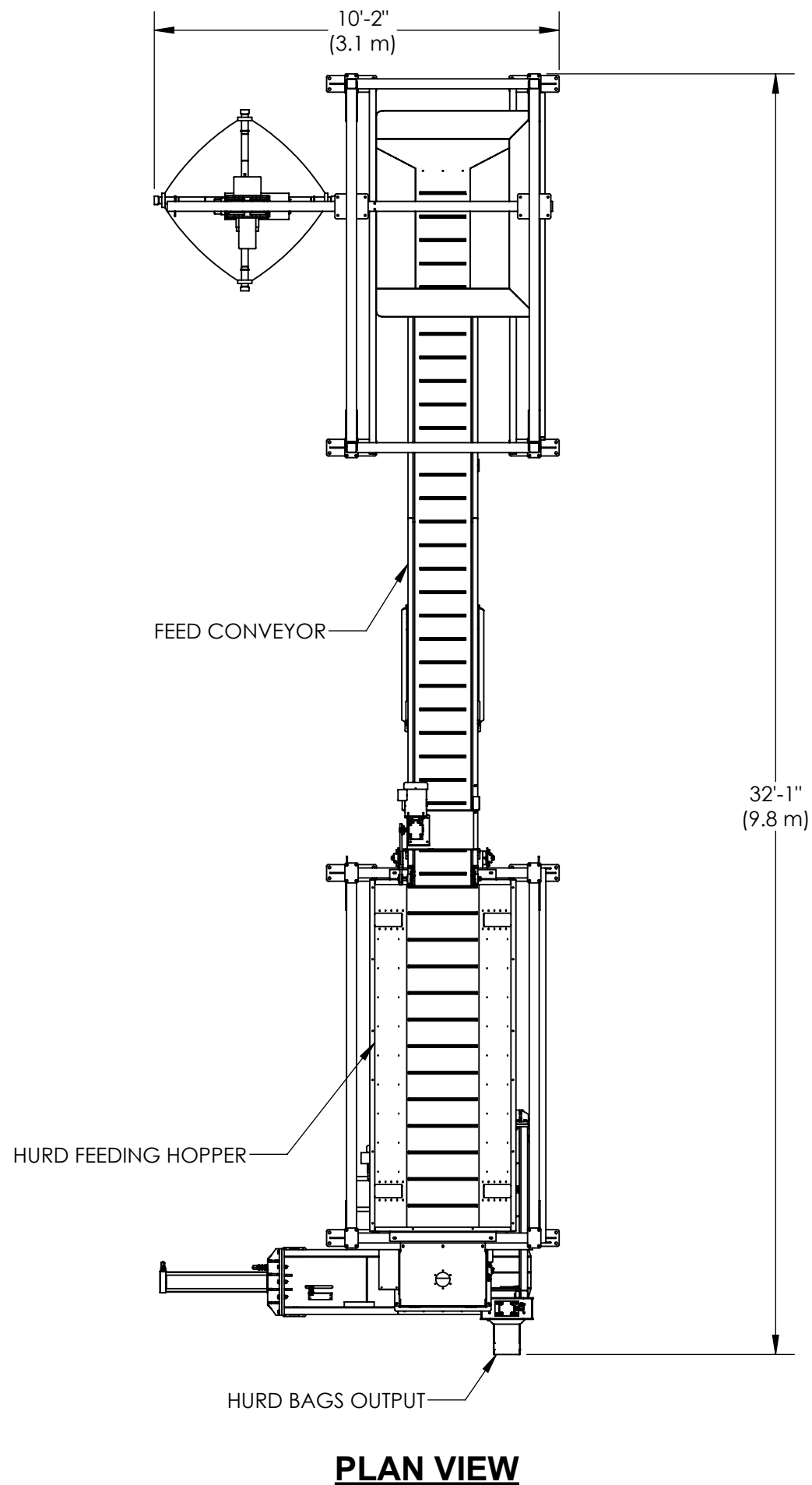
**PROPRIETARY AND CONFIDENTIAL**  
 THE INFORMATION CONTAINED IN THIS DRAWING IS THE SOLE PROPERTY OF CANADIAN GREENFIELD TECHNOLOGIES CORP. ANY REPRODUCTION IN PART OR AS A WHOLE WITHOUT THE WRITTEN PERMISSION OF CANADIAN GREENFIELD TECHNOLOGIES CORP. IS PROHIBITED.

DRAWN BY: \_\_\_\_\_ DATE: \_\_\_\_\_

CHECKED BY: \_\_\_\_\_ DATE: \_\_\_\_\_

APPR. BY: \_\_\_\_\_ DATE: \_\_\_\_\_

DESCRIPTION	
<b>COMPRESSION BAGGER - STANDARD VERSION</b>	
PART NO.	REV
<b>CB - LAYOUT</b>	
SCALE: NTS DO NOT SCALE DRAWING	SHEET 1 OF 1
WEIGHT: 9000 LBS	




**APPROVED FOR CONSTRUCTION**

APPROVED BY: \_\_\_\_\_

DATE: \_\_\_\_\_

QTY: \_\_\_\_\_

 <b>CANADIAN GREENFIELD</b> <small>THE INFORMATION CONTAINED IN THIS DRAWING IS THE SOLE PROPERTY OF CANADIAN GREENFIELD TECHNOLOGIES CORP. ANY REPRODUCTION IN PART OR AS A WHOLE WITHOUT THE WRITTEN PERMISSION OF CANADIAN GREENFIELD TECHNOLOGIES CORP. IS PROHIBITED.</small> <b>CALGARY, AB, CANADA</b>	<b>PROPRIETARY AND CONFIDENTIAL</b> <small>THE INFORMATION CONTAINED IN THIS DRAWING IS THE SOLE PROPERTY OF CANADIAN GREENFIELD TECHNOLOGIES CORP. ANY REPRODUCTION IN PART OR AS A WHOLE WITHOUT THE WRITTEN PERMISSION OF CANADIAN GREENFIELD TECHNOLOGIES CORP. IS PROHIBITED.</small>		DESCRIPTION <b>COMPRESSION BAGGER - LOW HEIGHT VERSION</b>	
	GENERAL ARRANGEMENT DRAWING SUBJECT TO CHANGE PLEASE REQUEST CURRENT LAYOUT	DRAWN BY: _____ DATE _____ CHECKED BY: _____ DATE _____ APPR. BY: _____ DATE _____	PART NO. _____ <b>CB - LAYOUT</b>	REV _____
		SHEET 1 OF 1		WEIGHT: 8000 LBS